



ONETOOL

# STEEL STORAGE SYSTEM



**JIANYE**

**JIANYE GROUP CO.,LTD**

**Company address:**

No.158, DAXIANGYONGLU, NANCUN, SHAWANZHEN, PANYU, GUANGZHOU, CHINA.

**Tel:** 8620-34737880/81/82

**Fax:** 8620-34737878

**E-mail:** JIANYE@JIANYEGROUP.CN

**Website:** www.onetool.cn

**Factory address:**

NO. 29, NANZHUANG ROAD, LIANHU INDUSTRY PARK, SHATOU STREET, PANYU, GUANGZHOU, CHINA

NO. 41, NANCUN INDUSTRY PARD, SHAWANZHEN, PANYU , GUANGZHOU, CHINA

\*\* Welcome to contact us for any specification need to be customized or OEM service



# WHO WE ARE?

Jianye Group is one of the leading business conglomerates in Guangzhou with special focus in manufacturing, OEM/ODM, marketing and distribution organization, deeply embedded in the industries and markets it serves.

We are focusing in hotel and restaurant equipment, industrial and commercial laundry equipment, air compressors, steel storage systems, machine tools and handbags.



## Professional Steel Storage System

### ABOUT ONETOOL Supply one-stop steel storage solution

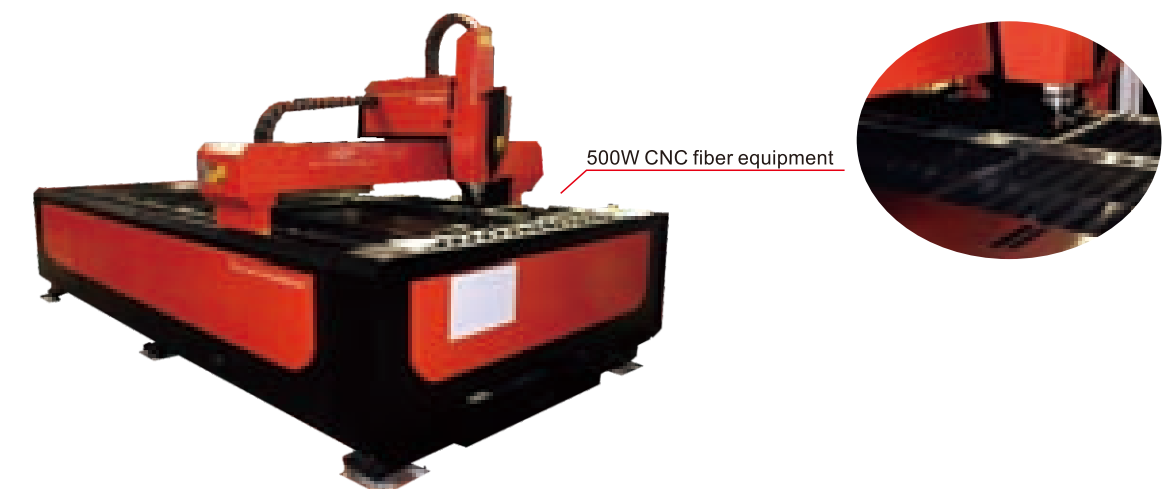
ONETOOL is a member of JINAYE GROUP, more than 18years manufacturing experience in STEELWORK. We insist on offering high quality products to customers, enjoy a high reputation in our customer group and industry.

**ONETOOL storage rack**, provide and create a safe and efficient storage environment with high space utilization to customers. Focusing on the design and manufacturing of light, medium, heavy duty rack and the mezzanine rack. With the characteristics of multi angle, high safety coefficient and large bearing capacity.

**ONETOOL station equipment**, a 'must have' tools organizer for higher efficiency and productivity in workshop, service center, vocational institution, production line, R&D center, automobile service garage, university or anywhere tools are being used for service, repair, overhaul or production.

**ONETOOL steel office furniture**, offering a wide range of office furniture for the school, company, government, hospital, hotel, fitness center, etc.

**R&D ability**: we continuously develop our R&D, pay attention to the market trend, grasp the opportunities, create and improve the products to meet market demand. Meanwhile, provide professional **OEM service**.



# ABOUT ONETOOL

# Cooperation Company



What do you wait?  
Choose us!  
Enjoy a good beginning.

# Content



# Solution





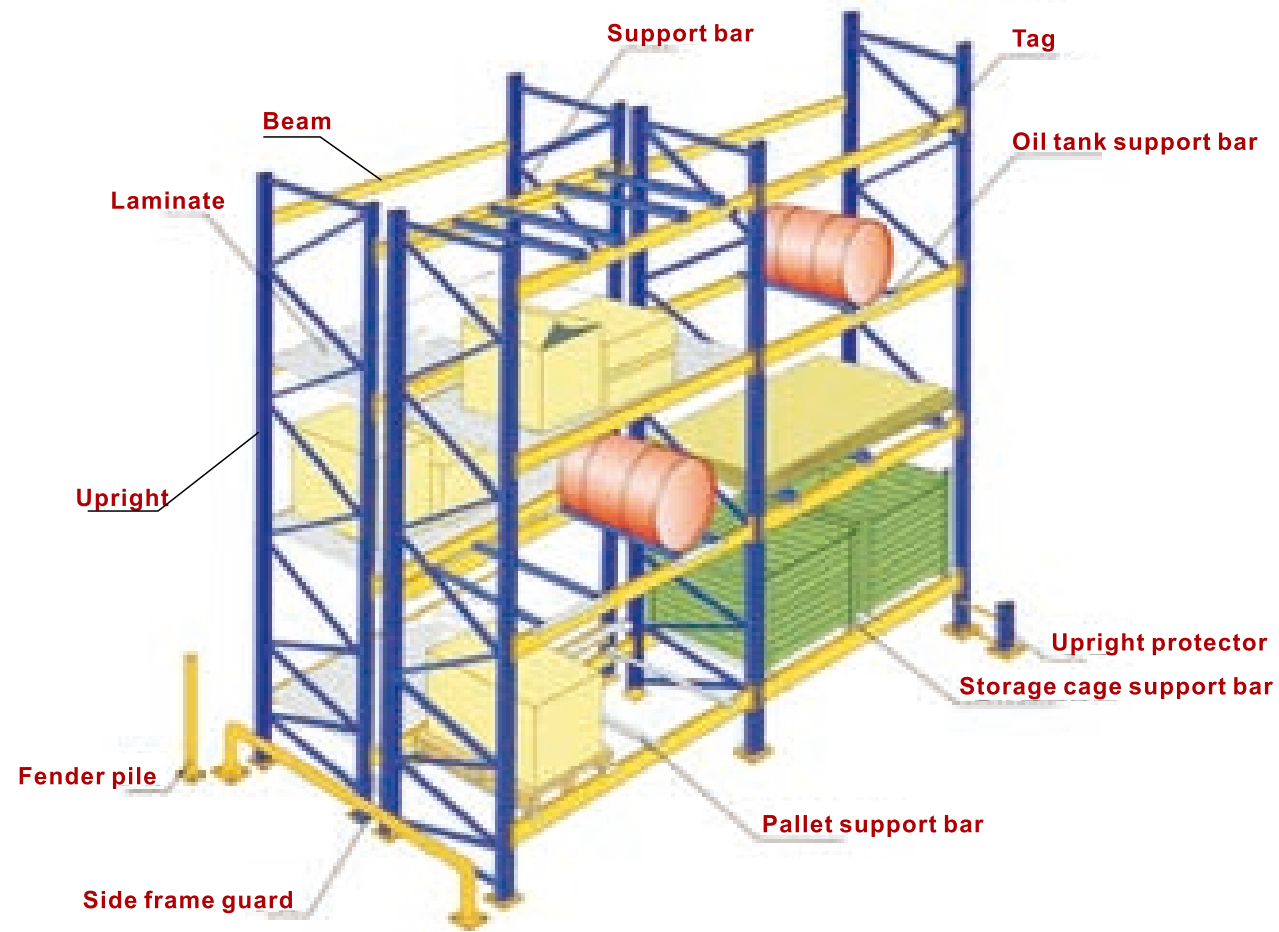
# STORAGE RACK



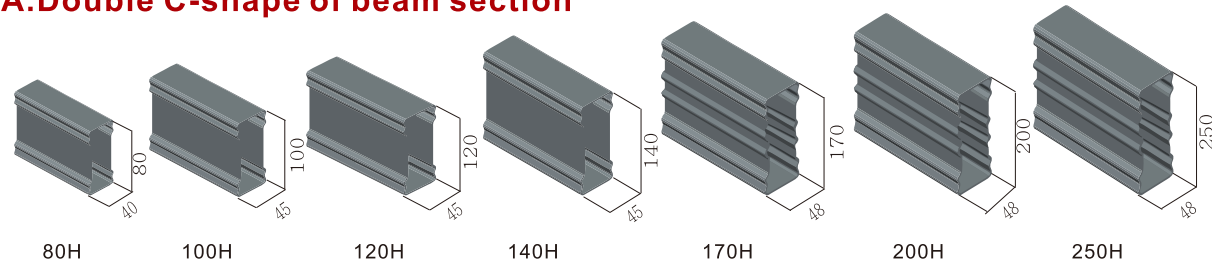
*Space For Future*



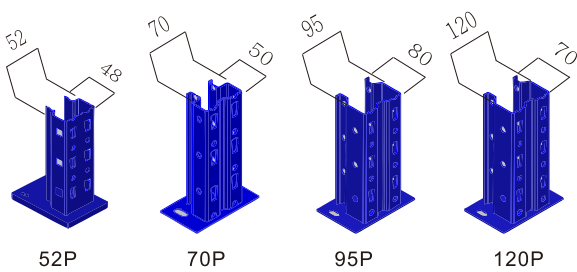
## Shelf Structure



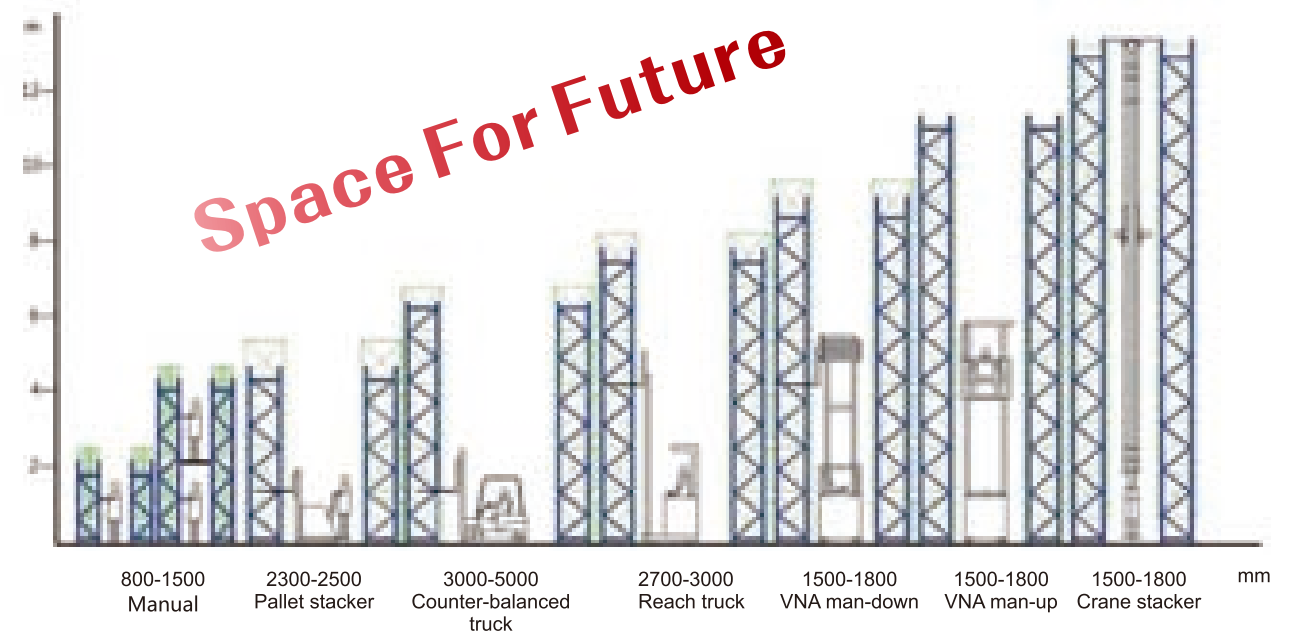
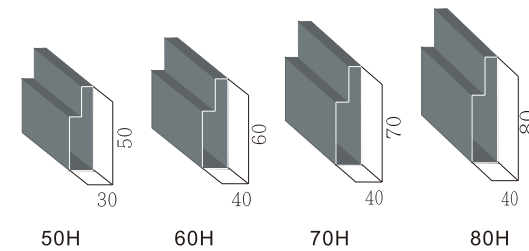
### A. Double C-shape of beam section



### C. Upright section



### B. P-shape of beam section



## Schematic



**Application:** Used in small warehouse, also can as a display rack in shopping malls, supermarket.



## Features of Light Duty Rack

- Assembling structure, optional combination, easy installation and disassembly.
- Load capacity: 200~800kg each layer.
- Layer height: each 50mm or 60mm pitch is adjustable.
- Professional surface treatment, superior appearance and durable.



### Standard for reference

Dimension (mm)	Upright (mm)	Beam (mm)	Load capacity (kg)	Layer
2300x800x3000	52x48x1.5	80x40x1.5	800	3



Installation Site



Wooden Layer Board



Finished Product Selection



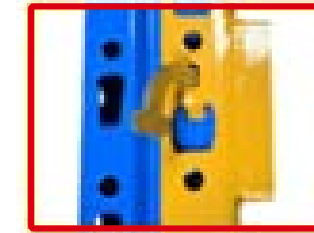
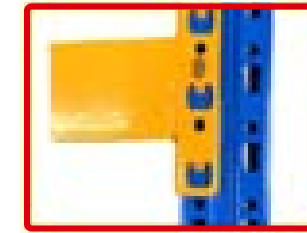
Steel Layer Board

**Application:** Suitable for manpower to release the goods, for the enterprise with large storage capacity.



## Features of Medium Duty Rack

- Assembling structure, optional combination, easy installation and disassembly.
- Load capacity:  $\leq 1500\text{kg}$  each layer.
- Layer height: each 60mm pitch is adjustable.
- Steel buckle connection between upright and beam, and set security key lock to prevent the loss.
- Row spacer can be used to strengthen the connection between the upright groups. Bottom of upright can be matched with the ground nail to improve safety and reliability.



### Standard for reference

Dimension (mm)	Upright (mm)	Beam (mm)	Load capacity (kg)	Layer
2300x800x3000	70x50x1.5	100x45x1.5	1500	3

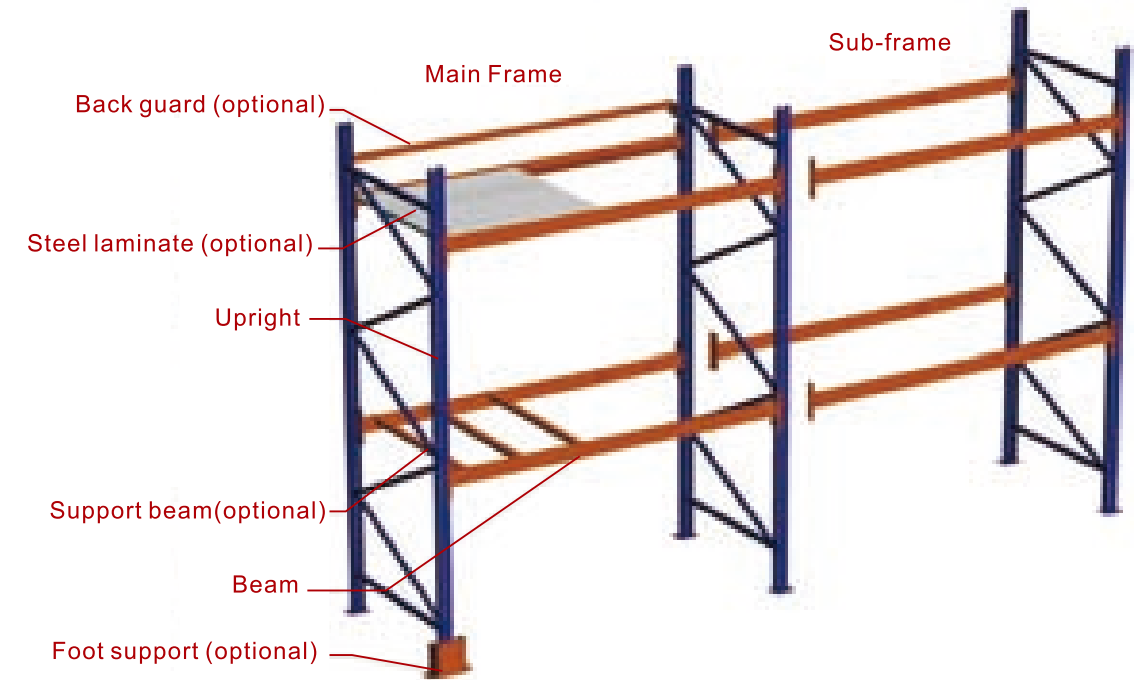
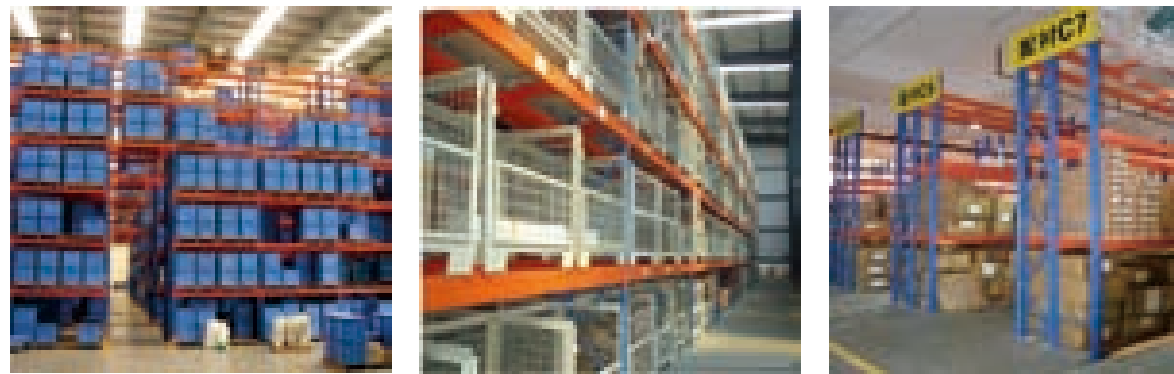


**Heavy duty rack**, also called beam rack, suitable for storage of all kinds of goods, can operate with forklift and stacker, widely used in high warehouse.

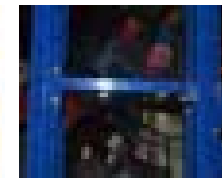


## Features of Heavy Duty Rack

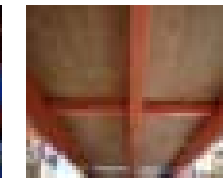
- Assembling structure, consist of upright, beam and related accessories, to ensure safe and reliable.
- Load capacity: large carrying capacity, up to 10ton/layer.
- Layer height: each 75mm pitch is adjustable.
- Simple operation, quick installation.
- Overall appearance.
- Fast access speed.



Back guard mesh



Back guardrail



Wood laminate



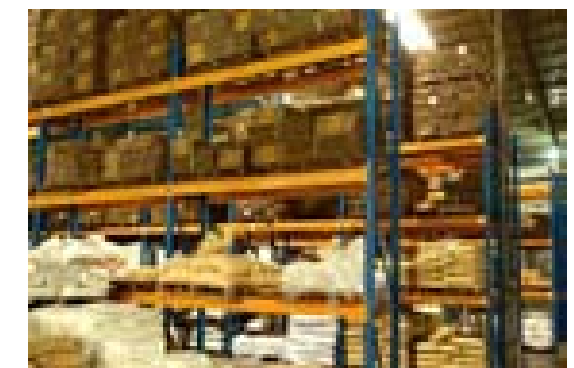
Steel wire mesh



Steel laminate

### Standards for reference:

Dimension (mm)	Upright (mm)	Beam (mm)	Load capacity (kg)	Layer
2300x800x3000	95x80x1.5	120x48x1.5	3000	3
2700x1000x3000	95x80x1.5	120x48x1.5	2500	3
2700x1000x3000	95x80x1.5	140x48x1.5	3800	4
2700x1000x3000	95x80x2.0	170x48x1.5	5000	4
2700x1000x3000	95x80x2.0	200x48x1.5	6000	4

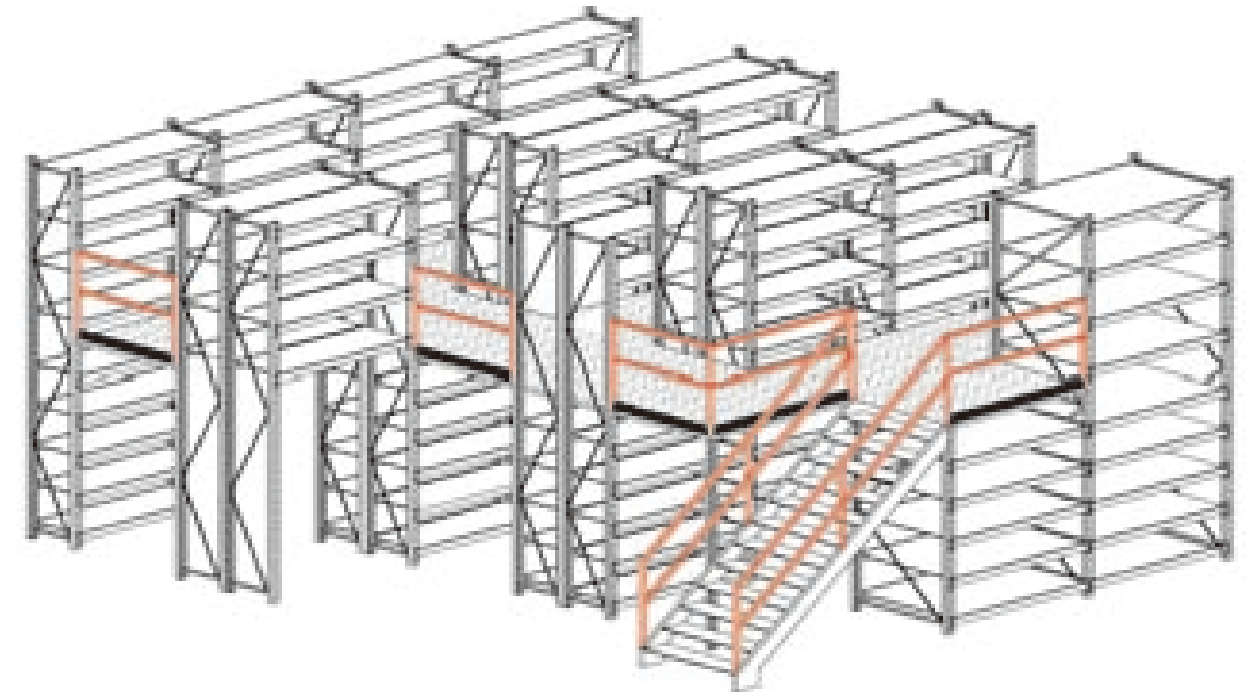




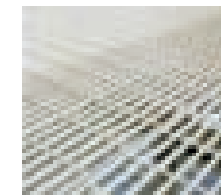


## Features of Mezzanine Rack

- Mezzanine rack system, built a loft in the rack, modular structure, can be used in board, pattern plate, steel and other material as the floor.
- Normally used for higher warehouse, can manual access, store the small goods packaging with large storage capacity, such as electronic equipment and machinery spare parts and others, make full use of space.
- Can be designed into two layers and multilayer, high space utilization and double make use of the ground space.
- Rack can be light, medium or heavy loading, any type is available, matching the users' actual requirements completely.
- Eliminate leased space costs and work in high efficiency combined with the lift platform.
- Strength and rigidity prevents compression damage to goods.



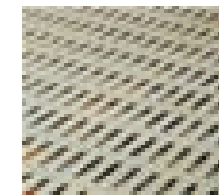
### Mezzanine rack panel options



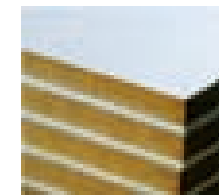
Grating plate



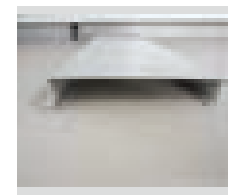
Pattern plate



Perforated plate



Wooden plate



Carbon steel plate





## Features of Steel Platform

- The steel platform is characterized by large carrying capacity, flexible design, easy to use and simple installation, has been widely used in the workshop or warehouse to effectively increase the storage capacity of the warehouse.
- All composite structure, and uprights are made from square or round tube, the beams are H type steel.
- As for the high warehouse, two or more layers of steel platform can be designed.
- Can be equipped with staircase and goods elevator.
- Suitable for storing smaller items, within easy reach of warehouse personnel, for easy picking of boxed stock.
- Can be completely disassembled, all parts can be reused, and their structure, size or location can be easily modified.



- 1 Main beam      2 Sub-beam      3 Connecting plate
- 4 Upright        5 Anchor bolt    6 Safety guardrail
- 7 Protection plate 8 Stairs guardrail 9 Stairs
- 10 Raking shores

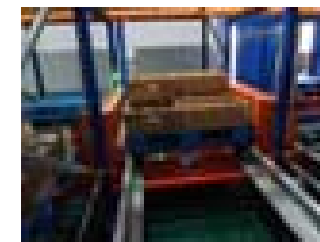


**Application:** Suitable for the goods with large quantity and few kind, such as food, beverage, chemical, tobacco and so on.

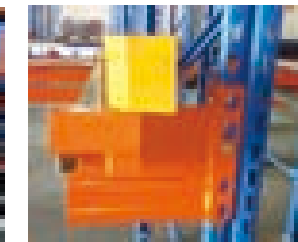


- Shuttle rack system is composed of high density storage rack, trolley and forklift, convenient ex-warehouse and warehousing, high access efficiency during ex-warehouse and warehousing.
- Shuttle rack removes the need for forklift trucks to enter the aisles and hence offers a cost effective and time saving storage solution.
- Better safety and anti-seismic performance than drive-in racks.
- Reduce the time in cold working, improve work efficiency and working security.
- Operating flexibility, the access of goods: FIFO and FILO are optional.
- Smart outlook, firm and durable, no need to maintenance.

**Save Time**  
+  
**Save Space**  
=  
**Save Money**



Shuttle car



Guide plate



Guide rail junction plate, with good bearing strength.



Remote control



Shuttle car can move the shelves from the depth of the tray to the front, use the forklift to take down the goods.

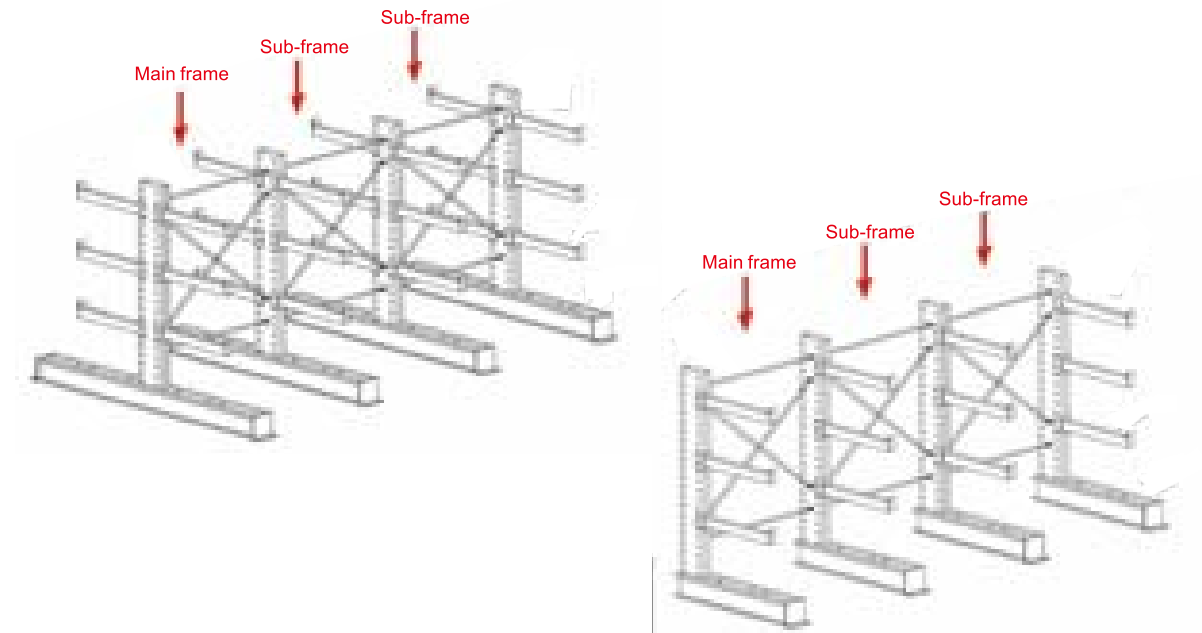
**Cantilever Rack** is one of the most important storage rack. For storing long material, sheet, pipe and irregular goods.



## Features of Cantilever Rack

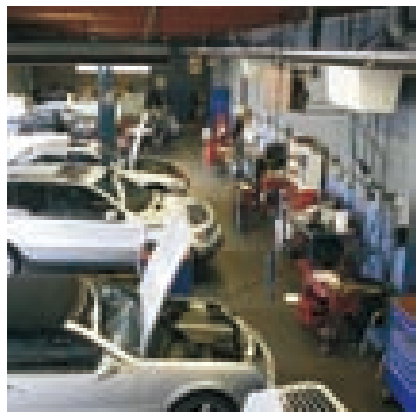
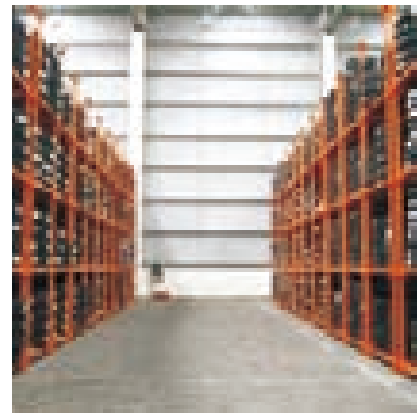
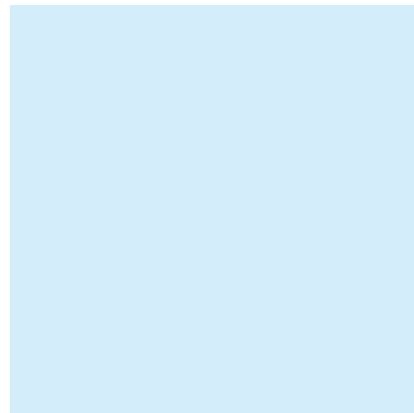
- Can be single-side or double-side.
- Stable structure.
- Good load capacity.
- High space utilization.

## Cantilever Rack Structural Drawing



# STATION

# EQUIPMENT



Workbench	22
Tool Cabinet / Tool Trolley	29
Tools Display Rack	31
CNS Tools Storage	33
Logistic Trolley / Table Trolley	35
Bottled Water Rack	36
Warehouse Rack Ladder	36
Stacking Rack	36
Scrap Iron Trolley	36
Spare Parts	37

# Why need STATION EQUIPMEN ?

Station Equipment as a 'must have' tools organizer for higher efficiency and productivity in

**workshop** **service center** **vocational institution** **production line**

**R&D center** **auto-service garage**

or anywhere tools are being used for service, repair, overhaul or production.

## STATION EQUIPMENT can realize:



### Production standardization

The trend of development of enterprise, meet 5S management



### Time, labor, space saving

Saving the time of tools searching which used to be on the ground or anywhere.

No need to hire someone specially in charge of material and tools management. Each working station will own their station equipment which the tools they need have been prepared inside.

Station equipment make full of space to improve storage capacity, which realize space saving.



### High efficiency and productivity

Station equipment as a good helper for the worker, play an important role in improving productivity and efficiency for the enterprise.



### Professional image

Improve a company's soft power and corporate image, offer a pleasing working environment to the worker, which can raise their working enthusiasm.



## Saving Money

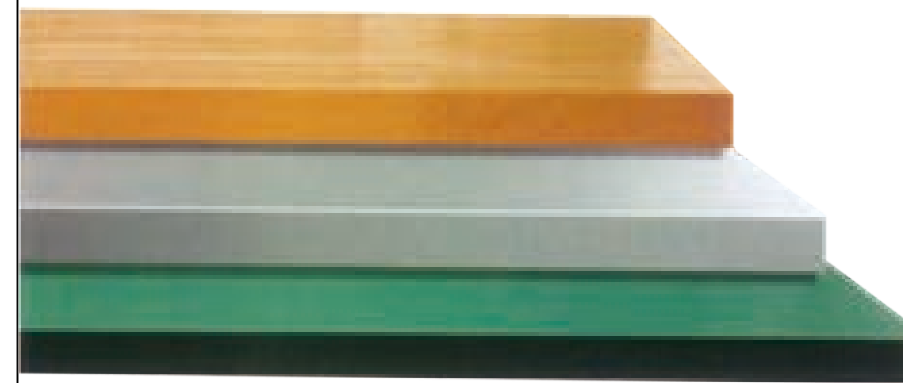
Low investment, high return.



# Heavy Duty Workbench

**Heavy duty workbench**, is built for rugged durability and stand up to the harshest work environments. It can be customized with a broad selection of accessories to meet your particular machine tool or production line needs. Widly used in the factory workshop, warehouse, maintenance workshop.

- Steady frame with maximum capacity 1000kg.
- Various of surface material, adapt to different application.
- Multiple standard accessories: Square hole hanging panel, Louver hanging panel, work light, tool cabinet, table vise and so on to meet the needs of various station.



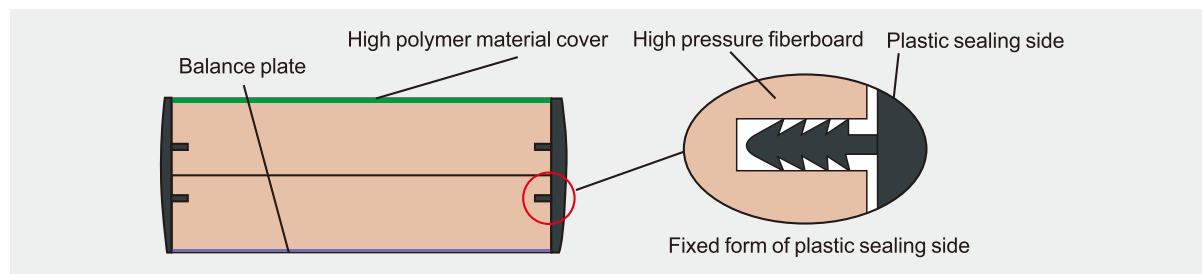
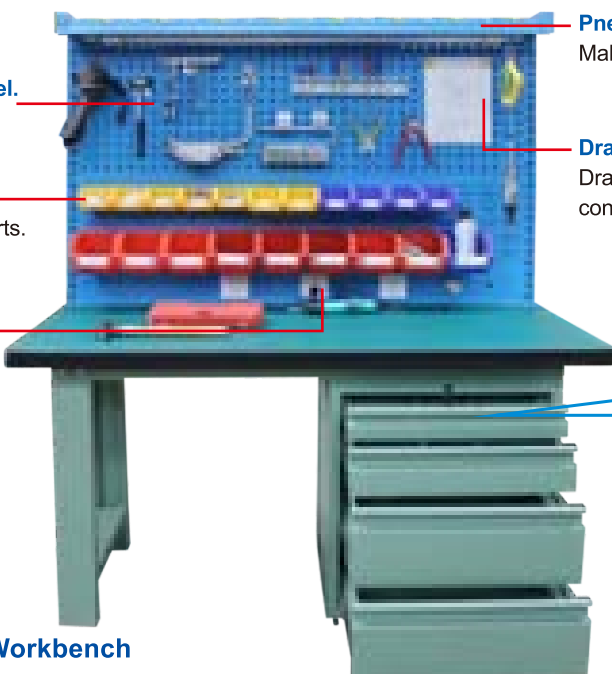
## Classification of Worksurface

- **Composite Board**: Powerful comprehensive, suit for installation, debugging and beating lightly.
- **Beech Board**: suit for heavy molds and machinery.
- **Fireproofing Board**: use for light duty workbench.
- **Stainless Steel Cover Board**: suit for the environment with oil, corrosive or ultraclean.
- **Metal Cover Board**: Good strength, impact resistance, wear-resisting & durable, long service life, use for heavy duty workbench.
- **Metal Board**: High strength, strong impact resistance, wear-resisting & durable, long service life, can assemble with vise, usually for heavy duty vise bench and maintenance workbench.



# Features of Composite Board

- Good surface roughness.
- 2mm thickness of PVC surface material which with the function of acid and alkali resistance, abrasion resistance, oil resistance.
- Use high pressure fiberboard for table, with impact resistance.
- Special circular table angel to prevent the damaged from the operation.
- Use sealing side of high strength plastic, it is stable, practical, not easy to damage, not easy to fall off.

**Special Composite Workbench**  
**Model:** OTSD-1504S  
**Spec:** 1500x750x(800+960)mm  
**20GP container:** 68 units  
**40HQ container:** 153 units

- Square hole hanging panel.** Tools displayed clearly.
- Louver hanging panel** Storage and classify the parts.
- Socket panel** Different standard socket can be installed on request.
- Pneumatic slide rail** Make an easy way for the operation.
- Drawing board** Drawing paper can be put on the panel, convenient for the worker.
- Drawers** The first two drawers with dividers make storage more organize and efficient. Fully (100%) retractable design in ball bearing slide can be easily remove.



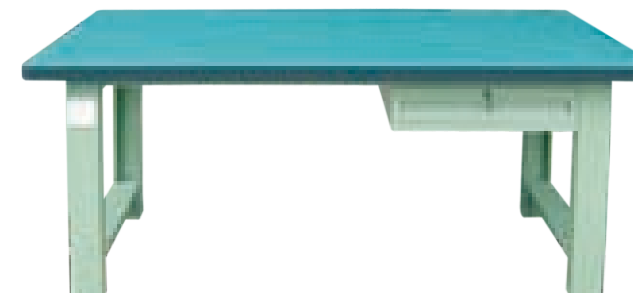
**Composite Workbench with Double Cabinet**

<b>Model</b>	<b>OTDD-1844</b>
<b>Dimension</b>	1800x750x800mm
<b>20GP container</b>	39 units
<b>40HQ container</b>	98 units
<b>Drawer size</b>	L490xW390 H:80/120/200/200mm



**Composite Workbench with 2-Hanging Drawer**

<b>Model</b>	<b>OTHD-1502</b>
<b>Dimension</b>	1500x750x800mm
<b>20GP container</b>	77 units
<b>40HQ container</b>	185 units
<b>Drawer size</b>	440x390x80/100mm



**Composite Workbench with 1-Hanging Drawer**

<b>Model</b>	<b>OTHD-1501</b>
<b>Dimension</b>	1500x750x800mm
<b>20GP container</b>	123 units
<b>40HQ container</b>	290 units
<b>Drawer size</b>	440x390x80mm

## Features of Beech Board

- Hard material, straight texture, reasonable structure.
- Wear-resisting, with luster, not easy to deformation.
- Easy processing, painting, good agglutination.

### Beech Workbench

<b>Model</b>	<b>HDW-2130</b>
<b>Dimension</b>	2100x750x800mm



### Beech Workbench with Double Cabinet

<b>Model</b>	<b>OTDD-1844</b>
<b>Dimension</b>	1800x750x800mm
<b>20GP container</b>	39 units
<b>40HQ container</b>	98 units



### Beech Workbench with 2-Hanging Drawer

<b>Model</b>	<b>OTHD-1802</b>
<b>Dimension</b>	1800x750x800mm
<b>20GP container</b>	66 units
<b>40HQ container</b>	156 units



## Features of Stainless Steel Board

- Flattening, safety, good strength, attractive, durable, 100% recycled.
- Resistance to air, steam, water and other weak corrosive medium. Resistance to acid, alkali, salt and other chemically aggressive medium.
- Suitable for using in dustproof, anti-corrosive environments. Improve the process condition with good effect.



### Stainless Steel Workbench 01

<b>Model</b>	<b>OTDD-1533S</b>
<b>Dimension</b>	1500x750x(800+960)mm



### Stainless Steel Workbench 02

<b>Model</b>	<b>OTWD-1500S</b>
<b>Dimension</b>	1500x750x(800+960)mm



### Stainless Steel Workbench 03

<b>Model</b>	<b>OTDD-1844</b>
<b>Dimension</b>	1800x750x800mm

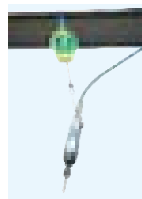
**LIGHT DUTY WORKBENCH**, With a flexible selection of standard components to meet the market requirement. Mostly use for repairing, testing, assembling, mechanical, electronic products and components, as well as packaging, calibration and R&D development.

### Features

Special design for placing the top shelf in horizontal or 30 degree to access the tools easily.



Hanging the air tool, slide left or right smoothly. Fluorescent lamp can be installed inside.



Tools displayed clearly, easy to take and put.



Use with hang bins, storage the parts in an organized manner.

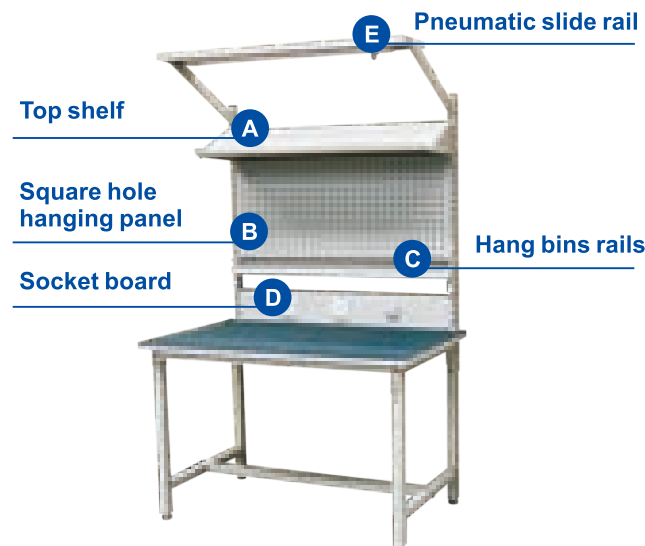


Esd robber mat, suitable for different environment and conditions.

Adjustable leg, 10cm height can be adjusted and fixed on the ground, keep balance.

### Light Duty Workbench

<b>Model</b>	<b>LDW-12ABCDE</b>
<b>Load capacity</b>	500KG
<b>Dimension</b>	1200x750x(750+1050)mm
<b>Net weight</b>	52.2KG
<b>20GP container</b>	183 units
<b>40HQ container</b>	434 units



LDW-2101



LDW-1211



MD-1200



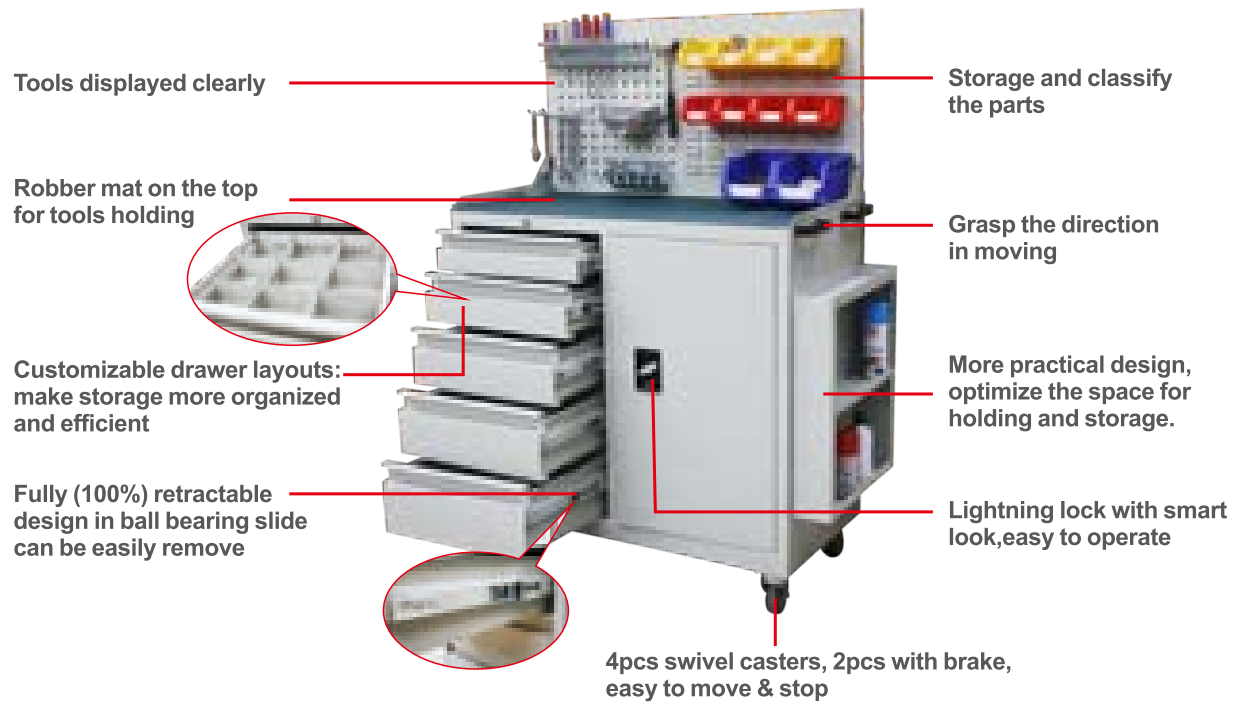
SW-0604



DW-1541

Name	Model	Load capacity (kg)	Dimension (mm)	20GP container (units)	40HQ container (units)
Light duty workbench	LDW-2101	150	2100x750x(800+960)	54	126
Light duty workbench	LDW-1211	300	1200x750x(800+500)	32	87
Medium workbench	MD-1200	500	1200x750x(800+950)	156	388
Single workbench	SW-0604	200	600x500x(800+400)	109	261
Double workbench	DW-1541	500	1500x1500x(800+600)	49	120

**TOOL CABINET**, making manufacturing, maintenance and repair more productive, helpful for on-time, accurate, high efficiency and low consumption during the tools storage and taking. Large volumes of tools and parts can be rolled out directly to the job where the workers can be readily accessible to maintenance and repair personnel.



### Tool Trolley with Single Door Five Drawers (WLG01-1AB)

Model	WLG01-1AB
Dimension	1100x500x(1000+500)mm
Load Capacity	400kg, 50kg/drawer
Net Weight	77KG
20GP container	44 units
40HQ container	112 units

Remark: A&B are optional parts for chosen on request.



### Tool Trolley

Model	WLG03S
Dimension	840x500x995mm
Load Capacity	250KG
Net Weight	72KG
20GP container	86 units
40HQ container	210 units



Model	WLG03	WLG04	WLG05	WLG04S
Dimension	600x545x705mm	600x545x860mm	600x545x860mm	1200x750x1030mm
Net weigh	39KG	47KG	47KG	--
20GP container	112 units	112 units	112 units	33 units
40HQ container	271 units	271 units	271 units	78 units



### Shelf Trolley

Model	STC75-30	STC75-21	STC75-22
Dimension	750x410x880mm	750x410x880mm	750x410x880mm
Packing size	765x461x321mm	765x461x251mm	765x461x251mm
Net weigh	16.5KG	17KG	20.5KG
Load capacity	300KG	300KG	300KG
20GP container	276 units	352 units	352 units
40HQ container	648 units	830 units	830 units

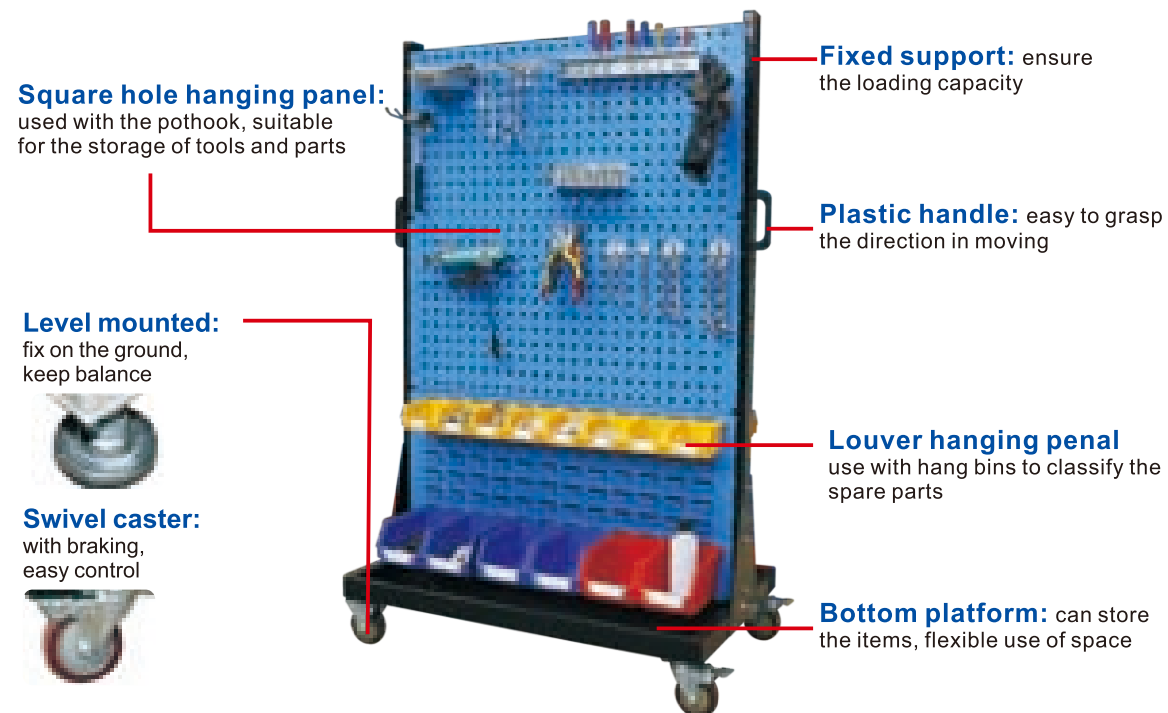
**Tools Display Rack** with two main parts: square hole hanging panel and louver hanging panel, combine with hang bins, pothook, top shelf and other accessories. Which is helpful to classify the storage of small amounts of tools and materials, easy to transport and make full use of space.

## Features of Tools Display Rack

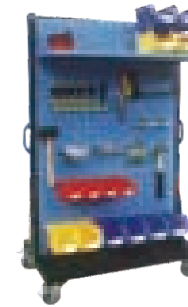
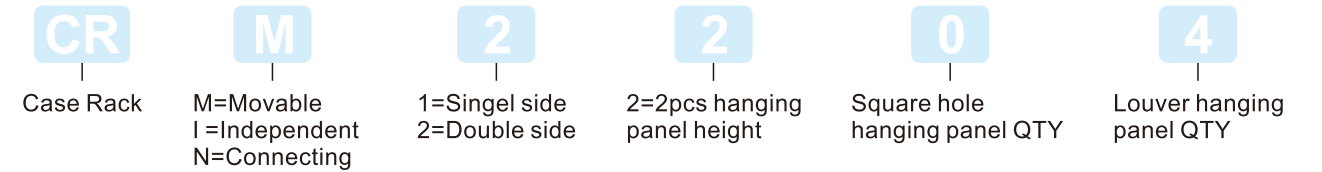
- Suitable for putting small parts;
- Save space, clear and tidy;
- The pothook used with square hole hanging panel, can be changed the hole position arbitrarily, safety and steady, satisfy the fixed location management, save time for searching; Hang bins used with louver hanging panel, small tools and materials can be separated storage by different color.

### Light Duty Workbench

<b>Model</b>	CRM-2342
<b>Load capacity</b>	250KG
<b>Dimension</b>	960x610x1560mm
<b>Net weight</b>	48KG
<b>20GP container</b>	341units
<b>40HQ container</b>	788units



## Coding mode



### Movable Type

Model	Specification Wx Dx H (mm)	Composition	Square hole hanging panel QTY	Louver hanging panel QTY
CRM-2204			0	4
CRM-2222	960x610x1110	Double side,4pcs panels	2	2
CRM-2240			4	0
CRM-2306			0	6
CRM-2324	960x610x1560	Double side,6pcs panels	2	4
CRM-2342			4	2
CRM-2360			6	0

### Independent Type

Model	Specification Wx Dx H (mm)	Composition	Square hole hanging panel QTY	Louver hanging panel QTY
CRI-1303			0	3
CRI-1312	970x375x1450	Single side,3pcs panels	1	2
CRI-1321			2	1
CRI-1330			3	0
CRI-2306			0	6
CRI-2324	970x630x1450	Double side,6pcs panels	2	4
CRI-2342			4	2
CRI-2360			6	0
CRI-1404			0	4
CRI-1413			1	3
CRI-1422	970x375x1910	Single side,4pcs panels	2	2
CRI-1431			3	1
CRI-1440			4	0
CRI-2408			0	8
CRI-2426			2	6
CRI-2444	970x630x1910	Double side,8pcs panels	4	4
CRI-2462			6	2
CRI-2480			8	0

### Connecting Type

Model	Specification Wx Dx H (mm)	Composition	Square hole hanging panel QTY	Louver hanging panel QTY
CRN-1303			0	3
CRN-1312	930x375x1450	Single side,3pcs panels	1	2
CRN-1321			2	1
CRN-1330			3	0
CRN-2306			0	6
CRN-2324	930x630x1450	Double side,6pcs panels	2	4
CRN-2342			4	2
CRN-2360			6	0
CRN-1404			0	4
CRN-1413			1	3
CRN-1422	930x375x1910	Single side,4pcs panels	2	2
CRN-1431			3	1
CRN-1440			4	0
CRN-2408			0	8
CRN-2426			2	6
CRN-2444	930x630x1910	Double side,8pcs panels	4	4
CRN-2462			6	2
CRN-2480			8	0

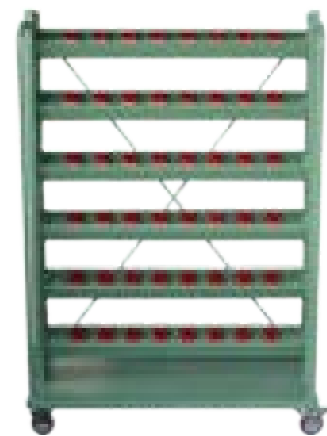


**CNC Tool Storage** specially store the cutter of various lathes. It's made of high-quality steel, stable and durable. Commonly used in the factory machining center, to facilitate centralized management of the milling cutter.



## Features of CNC Tool Storage

- Use bolt structure, can match up ISO and HSK series standard cutter;
- Herringbone pore structure, the tool apron can be adjusted to 0,15,30 degree by the bolt;
- All thread structure, easy installation;
- Equipment with stowage plate, convenient to storage other tools;
- Fully closed structure can be choose, dustproof and safety, suitable for tool magazine.



**CNC Tool Storage Rack (WLD02)**  
Spec:1200x600x1750mm



**CNC Tool Trolley (WLD01)**  
Spec:1100x600x880mm



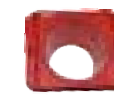
**CNC Tool Storage Cabinet (WLD03)**  
Spec:720x520x1800mm



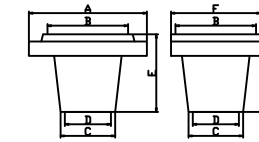
### Tool Cover



BT40



BT50



Mode	A(mm)	B(mm)	C(mm)	D(mm)	E(mm)	F(mm)
BT40	104.5	47	38	32	47	62
BT50	104.5	72	59	53	62	85



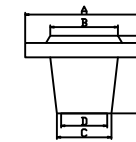
BT30



BT40



BT50



Mode	A(mm)	B(mm)	C(mm)	D(mm)	E(mm)
BT30	65	32	30	24	35
BT40	82	47	38	32	54
BT50	108	72	59	53	69



HSK-40



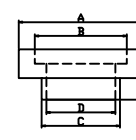
HSK-63



HSK-80



HSK-100



Mode	A(mm)	B(mm)	C(mm)	D(mm)	E(mm)
HSK40	64	41	36.5	30	35
HSK63	86.4	64	54.5	48	35
HSK80	103	81	66	60.5	35
HSK100	123.5	101	81.5	75	35

### Tool Apron

Tool Apron is the basic product for cutter storage series, can be used cooperatively with tool trolley, tool rack, tool cabinet for milling cutter, convenient for the transportation and storage of the milling cutters.

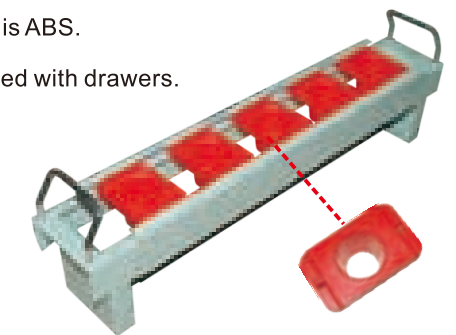
Storage BT and HSK series cutter, the material of the tool cover is ABS.

High strength, oil resistance, no damage to the cutter, can be used with drawers.



High quality cold-rolled steel sheet and special spray surface treatment, sturdy and durable; Use the screw to fix the tool cover on the tool apron, no need to change the tool apron, just change the tool cover after long time using.

Special design of the galvanized handle and special position, make it convenient to take in different workshop.



## Features

- The tool apron use with tool cabinet cooperatively
- Modular design, arbitrary combination, strong universality
- The hooks end of the tool apron, match with the bolt, more safety and reliable when using
- ◆ The tool apron is customized according to the number of cutter and the size of the tool cabinet.

**Logistic Trolley** is a kind of equipment with four castor to transport and storage the material. Commonly use for logistics distribution in the supermarket or logistics turnover between the factory processes.

## Features of Logistic Trolley

- Time and labor saving when transport, load and unload the goods;
- Product display markedly;
- Guardrail door and adjustable shelves can be provided if needed;
- Classification of goods storage, easy management;
- Assort with circulation boxes to use, convenient for delivery;
- Can folding stacking storage to save space;
- Use high quality steel sheet, sturdy and for durable.



WLC01



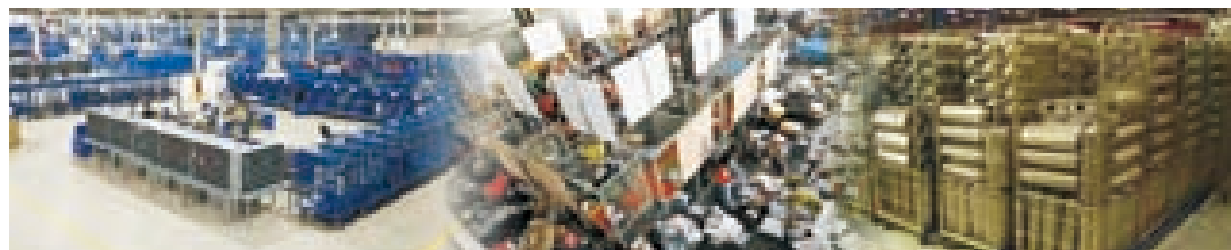
WLC03



WLC02

### Logistic Trolley

Model	WLC01	WLC03	WLC02
Dimension	1100x800x1450mm	1100x800x1700mm	1100x800x1700mm
Net weight	57KG	60KG	68KG
20GP container	81 units	63 units	54 units
40HQ container	188 units	160 units	128 units



**Bottled Water Rack**

Dimension 940x990x1635mm



**Warehouse Rack Ladder**

Dimension 1600x900x1800mm



**Stacking Rack**



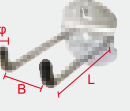
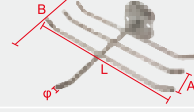

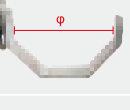


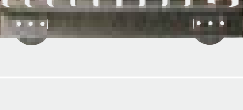


Dimension 1150x1000x1200mm  
 20GP container 64 units , 18units/pkgs  
 40HQ container 154 units , 11units/pkgs


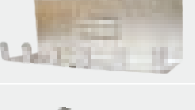
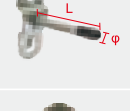




**Scrap Iron Trolley**

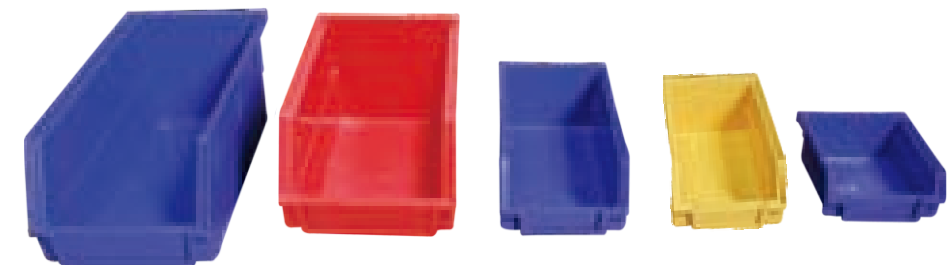
Dimension 1100x835x960mm

## Galvanized Hook

No.	Name	Picture	Specification
1	Drill Stands		<b>Model</b> KG-101 <b>L(mm)</b> 390 <b>Holes (no.)</b> 26
2	Single Hook		<b>Model</b> KG-401 KG-402 KG-403 <b>L(mm)</b> 25 50 75 <b>φ(mm)</b> 6 6 6
3	Double Hook		<b>Model</b> KG-501 KG-502 KG-503 <b>L(mm)</b> 25 50 75 <b>φ(mm)</b> 6 6 6 <b>B(mm)</b> 35 35 35
4	Six Pole Hook		<b>Model</b> KG-601 <b>L(mm)</b> 240 <b>φ(mm)</b> 6 <b>A(mm)</b> 44 <b>B(mm)</b> 138
5	U-shaped Hook		<b>Model</b> KG-1101 KG-1102 <b>L(mm)</b> 30 50 <b>W(mm)</b> 35 35
6	Bracket		<b>Model</b> KG-1801 KG-1802 <b>φ(mm)</b> 60 100
7	Pliers Hook		<b>Model</b> KG-1601 <b>L(mm)</b> 150 <b>B(mm)</b> 30
8	Spanner Shelf		<b>Model</b> KG-1201 <b>L(mm)</b> 125 <b>A(mm)</b> 75 <b>B(mm)</b> 145
9	Screw Driver Shelf		<b>Model</b> KG-1701 <b>L(mm)</b> 390
10	Single Oblique Hook		<b>Model</b> KG-1301 KG-1302 KG-1303 KG-1304 KG-1305 <b>L(mm)</b> 50 75 100 150 200 <b>φ(mm)</b> 6 6 6 6 6
11	Double Oblique Hook		<b>Model</b> KG-201 KG-202 KG-203 KG-204 KG-205 <b>L(mm)</b> 50 75 100 150 200 <b>φ(mm)</b> 6 6 6 6 6 <b>B(mm)</b> 35 35 35 35 35

No.	Name	Picture	Specification
12	Round Hook		<b>Model</b> KG-801 KG-802 <b>φ(mm)</b> 60 80
13	Sleeve Hook		<b>Model</b> KG-901 <b>L(mm)</b> 195
14	Inclined Straight Hook		<b>Model</b> KG-701 KG-702 <b>L(mm)</b> 50 100 <b>φ(mm)</b> 6 6
15	Hexagon Spanner Shelf		<b>Model:</b> KG-301
16	Saw Hook		<b>Model:</b> KG-1501

## Hang Bins

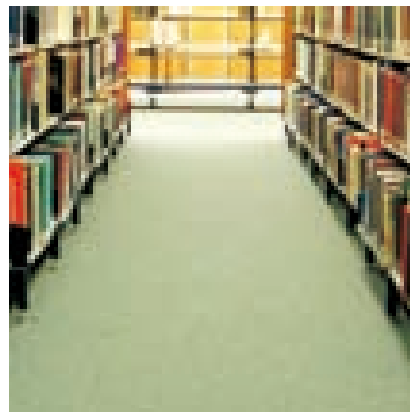
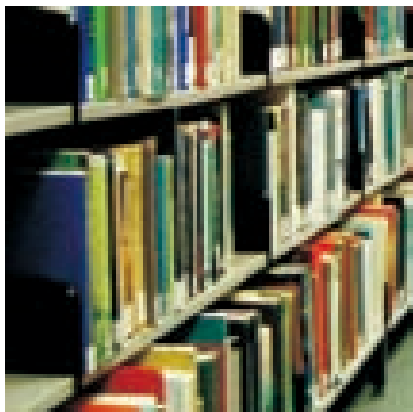
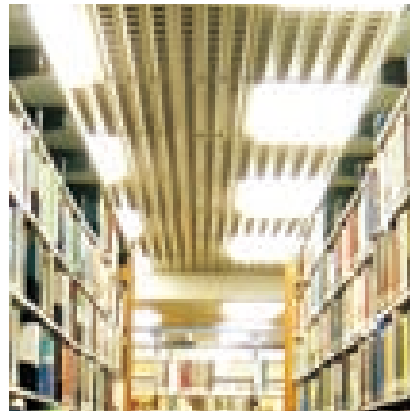
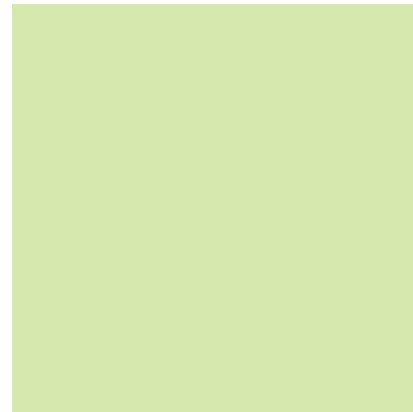
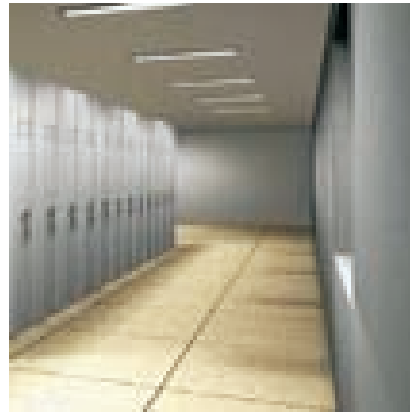



No.	Name	Size(mm)
1	Hang Bins	105x110x50
2	Hang Bins	105x140x75
3	Hang Bins	105x190x75
4	Hang Bins	140x220x125
5	Hang Bins	140x270x125

Three color can be chosen in each size: blue, red, yellow. Helpful for the sort management of the spare parts.

# OFFICE

## FURNITURE

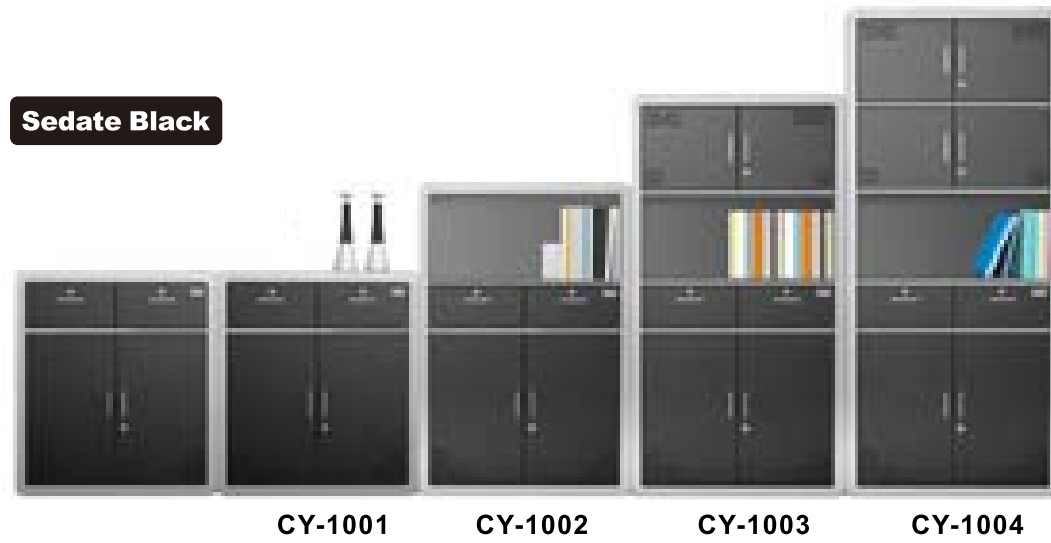


Fashion File Cabinet 	41
Digital Podium	42
Office Desk & Computer Desk	43
File Cabinet	45
Bookcase	47
Filing Cabinet / Drawer Cabinet	49
Stub Cabinet / Wardrobe	50
Locker / Shoe Cabinet	51
Electronic Password Cabinet	52

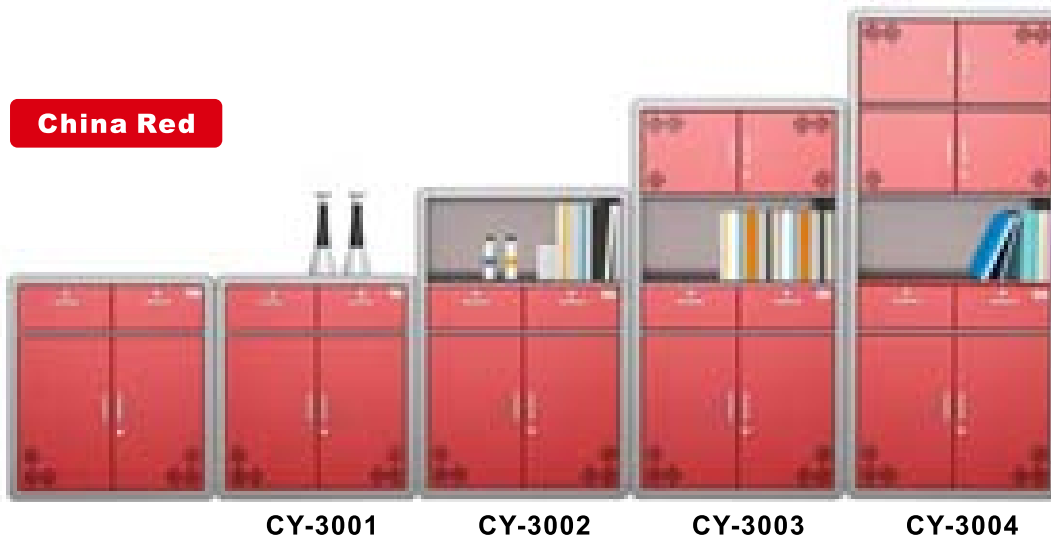
To work in a **relaxed** and **pleasant** office,  
**choose fresh File Cabinet**

- Patent outlook, unique style;
- Without pollution discharge;
- Metal powder, more bright, attractive, luxury with long life.

**Sedate Black**



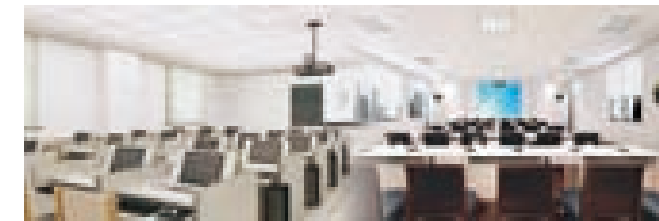
**China Red**



Model	Dimension(mm)	Packing size(mm)	20GP	40HQ
CY-1001	850x410x870	840x480x280	267	632
CY-1002	850x410x1210	1180x480x310	166	421
CY-1003	850x410x1580	1740x480x240	138	347
CY-1004	850x410x1950	1920x480x260	120	303

## Digital Podium

Model	DJ004
Dimension	1150x650x880mm
Net weight	45KG
20GP container	78 units
40HQ container	196 units



## Perfect device

for the institutions, schools, meeting rooms, training room, lecture halls, etc.

- Less space occupation;
- Multi functional design can be placed;
- Safe and good protection for the multimedia device;
- Much more convenient for the user;
- Disassembly structure, easy installation, saving cost and space for the shipment.







HT001



HT002/HT003

**Office Desk**

Model	HT001	HT002	HT003
Dimension	1100x600x750mm	1200x600x750mm	1400x700x750mm
Net weight	28KG	36.5KG	46.5 KG
20GP container	120 units	76 units	65 units
40HQ container	290 units	180 units	165 units



HT004



HT011



HT014/HT015

**Computer Desk**

Model	HT004	HT011	HT014	HT015
Dimension	1400x700x750mm	800x600x750mm	1200x600x750mm	1200x800x750mm
Net weight	35KG	16.5KG	-	-



HT016/HT017



HT018



HT020

**Computer Desk**

Model	HT016	HT017	HT018	HT020
Dimension	1200x600x750mm	1200x800x750mm	1500x800x750mm	1200x600x750mm
Net weight	26KG	27.5KG	35KG	31KG



HT023



HT024

**Computer Desk**

Model	HT023	HT024
Dimension	1200x600x750mm	1200x800x750mm
Net weight	24.5KG	33.5KG





HG001(2 Drawer)



HG002(3 Drawer)



HG003(4 Drawer)

**File Cabinet**

Model	HG001	HG002	HG003
Dimension	455x620x735mm	455x620x1030mm	455x620x1335mm
Net weight	17KG	23KG	30KG
20GP container	576 units	426 units	318 units
40HQ container	1398 units	990 units	764 units



HG004



HG005

**File Cabinet**

Model	HG004	HG005
Dimension	900x410x1800mm	900x410x1800mm
Net weight	42KG	41KG
20GP container	220 units	210 units
40HQ container	515 units	480 units



HG007



HG008



HG009

**File Cabinet**

Model	HG007	HG008	HG009
Dimension	900x410x1800mm	900x410x1800mm	900x410x1800mm
Net weight	35KG	42.5KG	33KG
20GP container	220 units	210units	220 units
40HQ container	515 units	480units	515 units



HG019

**Magazine Cabinet**

Model	HG019
Dimension	890x460x1760mm
Net weight	40KG
20GP container	228units
40HQ container	571units



HG010



HG011



HG012

**Bookcase**

Model	HG010	HG011	HG012
Dimension	900x410x1800mm	900x410x1800mm	900x410x1800mm
Net weight	42.5KG	42.5KG	46KG
20GP container	220units	220units	220 units
40HQ container	515units	515units	515 units



HG013



HG014

**Bookcase**

Model	HG013	HG014
Dimension	900x410x1800mm	900x410x1800mm
Net weight	46KG	51.5KG



HG015



HG038

**Bookcase**

Model	HG015	HG038
Dimension	900x410x1800mm	900x410x1800mm
Net weight	43KG	46KG
20GP container	210 units	-
40HQ container	480 units	-



HG039



HG046



HG045

**Bookcase**

Model	HG039	HG046	HG045
Dimension	1180x410x1800mm	900x410x1800mm	900x410x1800mm
Net weight	65KG	45KG	50KG



HG049



HG051



HG044



HG053

### Filing Cabinet

Model	HG049	HG051	HG044	HG053
Dimension	900x410x1800mm	900x410x1900mm	960x300x2000mm	800x300x2000mm
Net weight	35.5KG	49KG	42.5KG	44.5KG



HG035



HG016



HG036

### Drawers Cabinet

Model	HG035	HG016	HG036
Dimension	900x410x900mm	900x410x1800mm	900x410x1180mm
Net weight	30KG	61.5KG	39.5KG



HG050



HG017



HG018

### Stub Cabinet

Model	HG050	HG017	HG018
Dimension	900x320x1800mm	900x410x1800mm	900x410x1800mm
Net weight	45.2KG	40KG	42.5KG



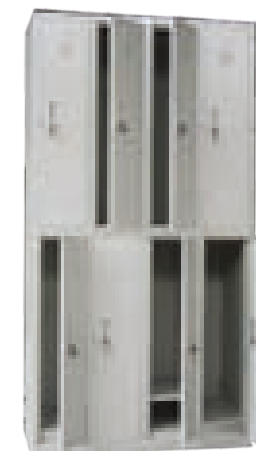
HG020



HG021



HG023



HG024

### Wardrobe

Model	HG020	HG021	HG023	HG024
Dimension	980x480x1800mm	980x480x1800mm	980x480x1900mm	980x480x1900mm
Net weight	35KG	37KG	40KG	43KG
20GP container	240units	208units	192 units	192 units
40HQ container	563units	484units	438 units	438 units



HG049



HG032



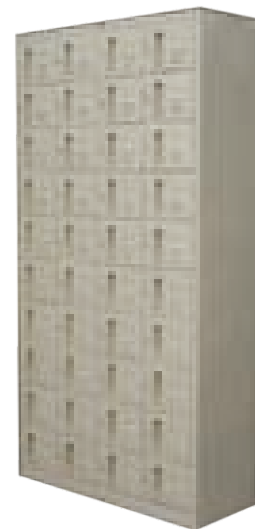
HG033

**Locker**

Model	HG022	HG032	HG033
Dimension	550x500x1950mm	980x410x1900mm	980x410x1900mm
Net weight	23KG	55KG	60.5KG
20GP container	618units	146units	-
40HQ container	1441units	332units	-



HG047



HG048

**Shoe Cabinet**

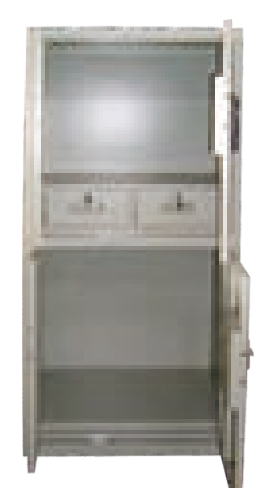
Model	HG047	HG048
Dimension	980x380x996mm	980x380x1900mm
Net weight	32KG	62.5KG



WB-D1



WB-D6



**Electronic Password Cabinet**

Model	WB-D1	WB-D6
Dimension	900x430x1800mm	900x410x1800mm
Net weight	71KG	74.5KG
20GP container	210units	210units
40HQ container	480units	480units



Password + key = double insurance  
input 3 times wrong password  
cause the warning sound



Movement and get injured  
will cause the warning sound



Large space



Jewellery



Small amount of  
cash and collect



Can put in the laptop



SLR camera



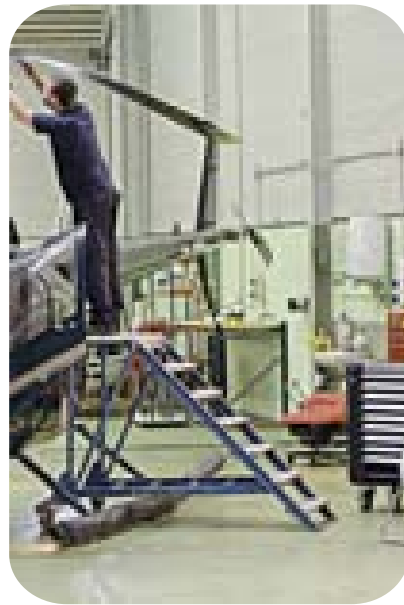
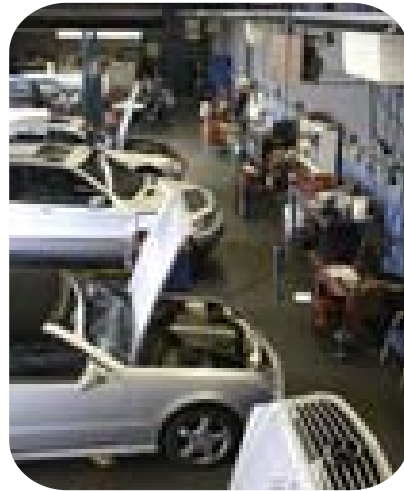
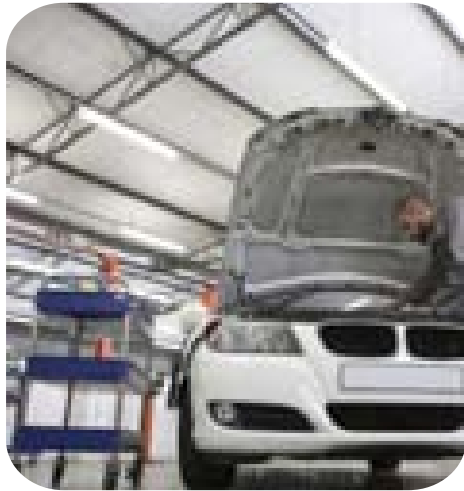
Important document



Important certificate



## SOLUTIONS FOR AUTO-SERVICE, REPAIR & MAINTENANCE



Tools displayed clearly with tool trolley and tools rack, convenient for workers to take. Needed tools and parts put in the shelf trolley and be transported to the working station, saving time for searching and labor waste. No need to work on the ground, can work on the workbench, improve working efficiency and environment.



Refer to 31

### Tools display rack

Tools and parts displayed clearly, easy take and move, also can be designed on the wall



Refer to 29

### Tool Trolley

Large load capacity for storage and display the tools and parts.



Refer to 23

### Heavy duty workbench

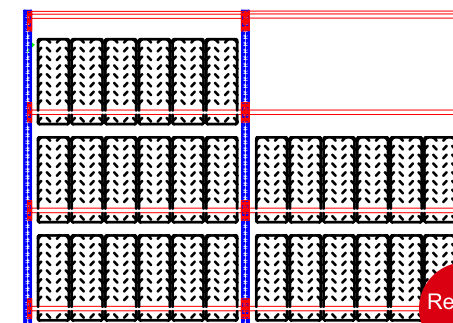
Load capacity reach 1000kg, can do repairing on the table, such as the air-end.



Refer to 30

### Shelf trolley

Simple structure, 300kg load capacity, for the frequently-used tools temporary placing, convenient for taking and moving to the different working station.



Refer to 05

### Cartwheel storage rack

Specially used in the auto-service for the cartwheel display and storage.

## SOLUTIONS FOR ELECTROIC INDUSTRY



Refer to 27

### Light duty workbench

Functional workbench can meet the different requirement of the production line, such as assembly, wiring, debugging and packing.



Refer to 30

### Shelf trolley

Can put in the tools which always been used or transport the small workpiece.



Refer to 35

### Logistic trolley (table trolley)

Use to transport the goods to next process or warehouse.



Refer to 26

### Heavy duty workbench

Table surface can be chosen base on requirement.

## SOLUTIONS FOR MECHANICAL PROCESSING



Refer to 29

### Tool Trolley

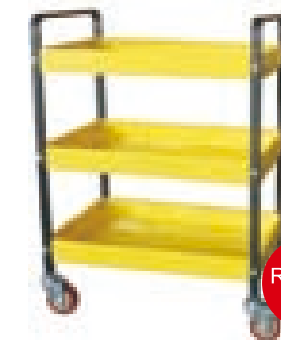
Large load capacity for storage and display the tools and parts.



Refer to 33

### CNC tools trolley

Use in CNC machinery workshop, display the CNC tools clearly and easy to take.



Refer to 30

### Shelf trolley

The finished goods can be placed in the shelf trolley; tools can be placed on it, which is needed to be transported at any time.



Refer to 26

### Heavy duty workbench

Can install with vise to use, 1000kg load capacity.

## SOLUTIONS FOR WAREHOUSING & LOGISTICS



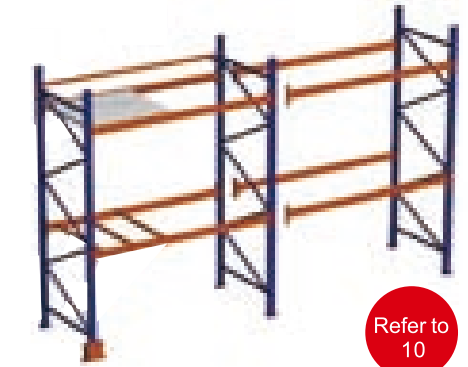
**Warehousing and logistics** are the important parts in the enterprise. Station equipment will be a good helper and organizer in space management and time saving.



Refer to 36

### Stacking rack

Folding structure, goods storage directly, no need to add the pallet. Easy to transport by forklift at any direction.



Refer to 10

### Storage rack

According to the actual requirement, light duty or heavy duty can be chosen.



Refer to 35

### Logistic trolley (table trolley)

Storage the goods in the warehouse, which can be transport easily at any time. Also can customize the logistic trolley base on the product features.



Refer to 31

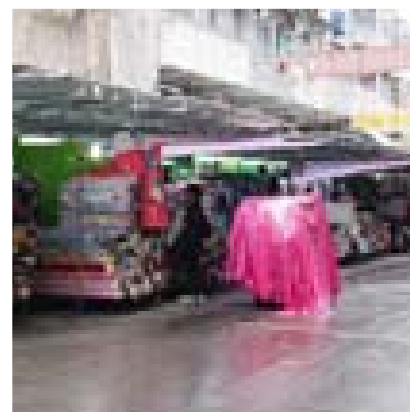
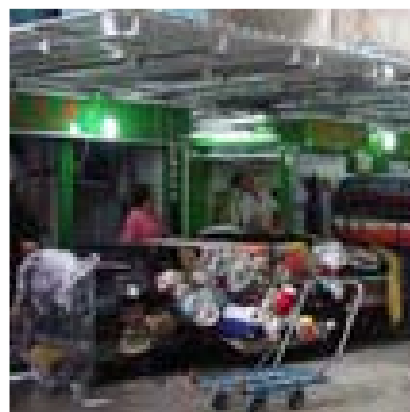
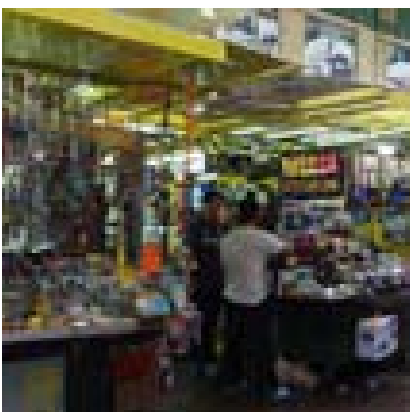
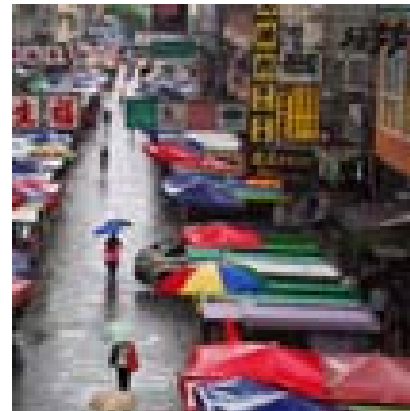
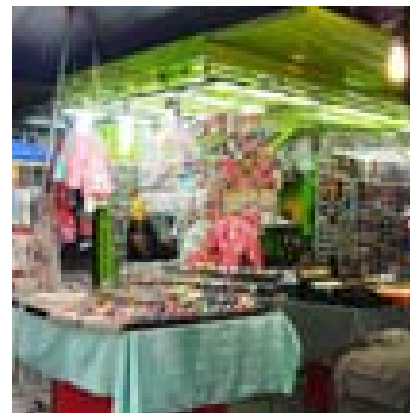
### Tools display rack

Use for the tools unified management.



Now,  
**Hong Kong**  
Has fully promote this  
independent stall,

WHAT DO YOU WAIT



# Independent Market Stall




**To our dear customers:**


**ONETOOL**, is not just a manufacturer for producing steelwork, we are focus on the development of the market, listen to the requirement from you, our R&D team will discuss together and make the product meet the trend of the market and your demand. Your trust is the best motivation to us.




# Independent Market Stall

-  Have you ever thought that, people didn't come into your stall just because your stall didn't attract them

---

-  Do you always boring that is not enough space to show your products clearly

---

-  Do you pay too much time on the preparation of opening your stall and closing, and less time on your family?



**Different from**  
the traditional stall,

The new type independent market stall enjoy following

**A  
D  
V  
A  
N  
T  
A  
G  
E  
S**

- Fresh & attractive appearance, catch people's attention at once.**
- Practical design, maximize space utilization, professional layout.**
- Strong and reliable quality, waterproof and rust-proof, ensure safety.**
- Save both time and labour, free from worry, easy application.**
- Most importantly, beautify the street environment of the country.**



**RICH  
COLORS  
FOR  
CHOSEN**

## A new age of product: Independent Market Stall



**Practical design, Wide range of application, Suitable for clothes, Jewelry, Small appliance, Mobile phone accessories and Food selling.**